



KITCHENS BY JULIE, INC.

847.516.2226

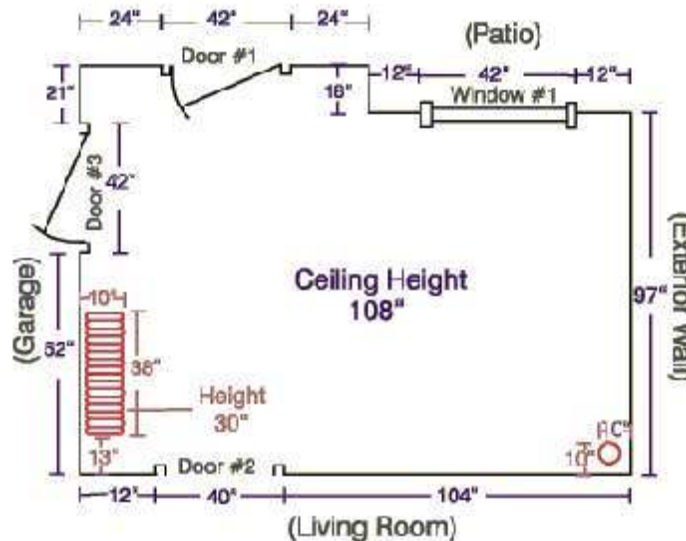
27-A Jandus Rd., Cary, IL Fax: 847.516.2242

How To Measure Your Existing Space

Below is a helpful step-by-step guide for drawing and measuring your kitchen, bath or other space.

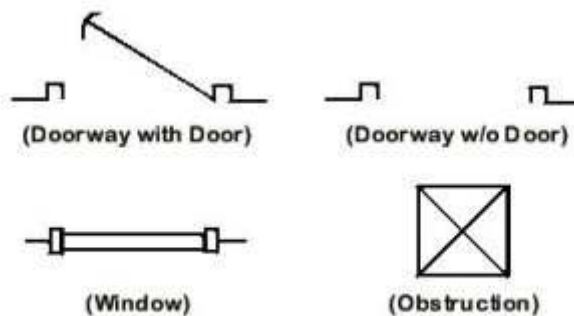
NOTE: If you are remodeling, do not include in your measurements current cabinetry or other furniture that will not be kept, such as kitchen tables.

NOTE: All of your measurements should be in inches. For example, if you measure a wall that is 10 feet, write it as 120".



Step 1:

Draw a rough outline of your kitchen. Use the following symbols in your drawing for doors and windows.



NOTE: For doorways with doors, draw the doorway according to which way the door swings.

Step 2:

Draw in any obstructions, such as radiators, pipes, sink plumbing, etc., that you either cannot move or do not want to move.